

### Diode driver (QCW / CW)

#### Information



Pulse / CW laser power supply for diode-pumped lasers is designed to supply diode arrays, that are used for the pumping of high-power solid-state or fiber lasers. Power supply is designed for operation in the laboratory, educational, experimental and industrial applications. Additionally the power supply can be equipped with a thermal stabilization controller (TEC controller). Also it has current limit, duty cycle limit and safety interlocks. Could be modified by a customer's request for the optimal selection of parameters for a specific load.

#### Specifications

	SF530		SF550	
	pulse mode	CW	pulse mode	CW
Pulse rate* (F)	1-500 Hz, single mode	-	1-1000 Hz, single mode	-
Output voltage* (V)	0-160 V	0-160 V	0-200 V	0-200 V
Output current* (I)	1-300 A	1-150 A	1-300 A	1-150 A
Pulse duration* (τ)	50-1000 μs	-	50-1000 μs	-
Rise time**	<60 μs	-	<60 μs	-
Fall time**	<60 μs	-	<60 μs	-
Output current tolerance	0.3 %	0.3 %	0.3 %	0.3 %
Average output power* (P)	2.5 kW	2.5 kW	4.6 kW	4.6 kW
Data display	LCD		LCD	
Communication interface***	RS232		RS232	
Trigger in	5 V, 10 μs		5 V, 10 μs	
Trigger out	5 V, 10 μs		5 V, 10 μs	
Interlock	switch contact closure		switch contact closure	
Cooling	air cooled		air cooled	
Power Input	single phase 220 VAC, 50Hz		three phase 220/380 VAC, 50Hz	
Dimensions	440*132*440 mm; 3U		440*177*520 mm; 4U	
Weight	20 kg		25 kg	

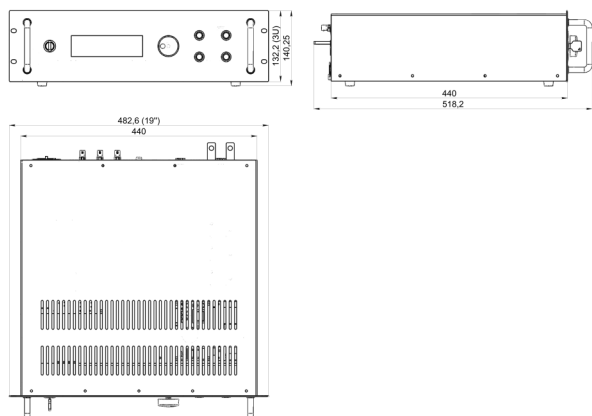
\* Values are limited by average power:  $F \cdot V \cdot I \cdot \tau \leq P$  (pulse mode);  $V \cdot I \leq P$  (CW mode)

\*\*With a length of laser diode power wire is not more than 2m

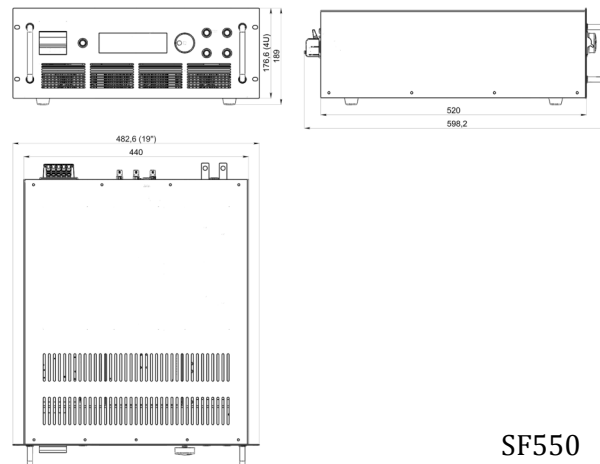
\*\*\*Installation of FOCL, LAN on request

### Размеры

Ы



SF530

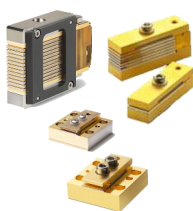


SF550

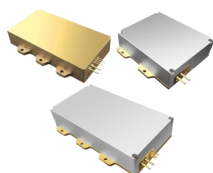
### Examples of laser diode arrays

## II-VI

Laser II-VI



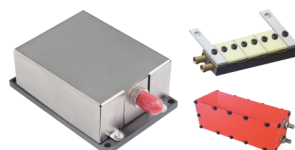
BPC/OPC40W,60W& 80W — 92A 1,8V  
BPC/OPC80W — 81A 1,65V  
HPC50W — 54A 1,65V  
Monsoon Compact framed vertical stack module  
Monsoon Frameless Vertical Stack Module  
Compact Bar on Microchannel cooler and etc.



808nm150W - 11A 40V / 915nm150W — 13.5A 24V  
915nm158W - 11A 36V / 915nm200W — 13.5A 35V  
940nm150W - 14A 24V / 940nm200W — 14A 35V  
976nm150W - 14A 23,8V / 976nm200W — 14A 35V  
976nm100W - 11,5A 24V / 976nm140W — 14A 23,8V  
976nm180W - 14A 35V  
915/940/976nm на 600W / 1000W / 2000W / 3000W and etc.



Vshiny FL-HVS61-6X1-360-760 — 80A 15V  
Vshiny FL-HVS61-6X1-600-1060 — 115A 2V  
Vsilik FL-1200-1000-808 — 110A 20V and etc.



Emitter of injection lasers IL-1M2  
KMLD-130 — 65A 6V  
32DL-504 / LLD-10  
SLM-7 / SLM-P-8N  
SLMP-6HП / LLD-500-1 and etc.